

11th Annual Updates in Cardiovascular and Pulmonary Disease

October 11 and 12, 2024

The Lodge at Whitefish Lake | Montana

LOGAN
HEALTH

CONFERENCE REGISTRATION

Early registration is encouraged as space is limited.

To learn more about the program and **registration information:**

logan.org/conferences



Registration Fee:

On-Site or Virtual Attendance Providers - MD, DO, NP, PA, Pharmacists (CME Credits)	\$150
On-Site or Virtual Attendance - RN/LPN	\$80
On-Site or Virtual Attendance - Other Health Care Professional	\$80
On-Site or Virtual Attendance - Student.....	\$25

Payment includes professional credits, a syllabus, and food offered during the conference for on-site attendees.

No refunds after September 11, 2024. All refunds granted prior to September 11, 2024 will have a non-refundable service charge.



The Lodge at Whitefish Lake

CONFERENCE LODGING

Conference Location: The Lodge at Whitefish Lake
1380 Wisconsin Avenue | Whitefish, MT 59937
Phone (406) 863-4000 | lodgeatwhitefishlake.com

In order to obtain the group rate pricing, please identify your reservation as associated with the conference.

lodgeatwhitefishlake.com/groupslogin

Group ID is: CARDIO24 | Group PASSWORD is: WHITEFISH

Alternative accommodations can be found at:
explorewhitefish.com/stay

Logan Health attempts to provide reasonable accommodations for any known disability that may interfere with a person participating in any service, program or activity.



CONFERENCE DESCRIPTION

Join us at our conference as we explore new treatment modalities and emerging trends to enhance patient care and outcomes in both cardiovascular and pulmonary specialties. This conference aims to result in increased health care provider confidence in making an appropriate diagnosis and treatment decisions.

TARGET AUDIENCE

The target audience encompasses a wide spectrum of healthcare providers including specialists, family practitioners, internists, hospitalists, cardiovascular and pulmonary specialists, emergency medicine practitioners, physician assistants, nurse practitioners, nurses, cardiac rehabilitation specialists, and other interested allied health care providers.

Keynote Speaker:



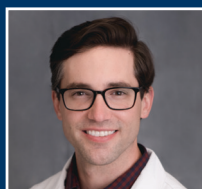
Frederick Welt, MD

Margaret Amundsen Professor of Cardiology

Interventional Cardiology

University of Utah Health Sciences Center

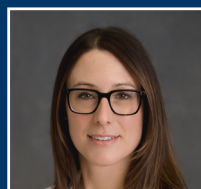
Course Director:



Joshua Vogt, MD

Interventional Cardiology

Moderator:



Kira Kitchens, FNP-C

Cardiology

COURSE OBJECTIVES

Upon completion of this conference, attendees should be able to:

- Recognize and correlate cardiac physical exam findings with cardiac pathology.
- Explore the fundamentals of cardiac rehab to promote cardiovascular wellness.
- Provide learners with insights to optimize dietary choices for improved heart health and reduced cardiovascular risk.
- Explore the Watchman procedure's benefits, patient selection criteria, and emerging research.
- Understand the various mechanical support options and metrics for managing acute heart failure and cardiogenic shock.
- Understand the epidemiology of aortic stenosis and indications for referral.
- Understand how to incorporate newer data regarding coronary disease and chest pain into practical management.
- Discuss how the use of inhaled corticosteroids is evolving.
- Provide an overview of new medications and devices for heart failure.
- Identify a practical approach to evaluation and treatment of insomnia.
- Review repair vs replacement strategies for heart valves.
- Understand new data regarding TAVR and long-term outcomes.

NURSING PRE-CONFERENCE OBJECTIVES

- Upon completion, the learner will understand the benefits of simulation in improving client outcomes.
- The learner will apply a consistent step-by-step approach to 12 lead EKG interpretation.

Conference Speakers:

Matt Brunson, MD

Robert Curtis, DO

Thomas Flass, MD

Nathaniel Hall, MD

Alexis Harrison, MD

Joseph Krezowski, MD

Matthew Maxwell, MD

Nursing Pre-Conference Speakers:

Carla Genovese, MSN, CNE, CCRN

Rexanne Wieferich, MN, RN, CVBC, CNL

FRIDAY, OCTOBER 11, 2024

11:00 a.m. - 4:00 p.m. Conference Sign In & Exhibits

Hotel Registration available at 4:00 p.m.

— NURSING PRE-CONFERENCE NO CME CREDIT —

11:55 a.m. Introduction to Nursing Preconference Session

12:00 p.m. Does Simulation Improve Client Safety?

12:35 p.m. 12 Lead EKG Interpretation for Nurses

1:15 p.m. BREAK | EXHIBITS | MEET THE SPEAKERS

1:25 p.m. Welcome to 11th Annual Updates in Cardiovascular and Pulmonary Disease Conference

1:35 p.m. Back to Basics: The Cardiac Physical Exam

2:20 p.m. Cardiac Rehab: Restoring Heart Health

3:05 p.m. Nutrition and Heart Health

3:50 p.m. BREAK | EXHIBITS

4:10 p.m. The Watchman Procedure

4:55 p.m. Mechanical Circulatory Support: Heart Failure and Cardiogenic Shock

5:40 p.m. Update on Valve Disease: What Should the Primary Care Clinician Know

6:25 p.m. Adjourn

6:25-7:25 p.m. Hors d'oeuvres and Drinks

SATURDAY, OCTOBER 12, 2024

7:30 a.m. BREAKFAST | EXHIBITS | MEET THE SPEAKERS

8:30 a.m. Coronary Disease Update: Messages from the Newest Chest Pain Guideline

9:15 a.m. Asthma: The Under Use of Inhaled Corticosteroids

10:00 a.m. New Things in the Heart Failure Toy Box

10:45 a.m. BREAK | EXHIBITS | MEET THE SPEAKER

11:00 a.m. Insomnia: Beyond Hypnotics

11:45 a.m. Mitral and Tricuspid Valve Surgery: Repair, Replace or Retreat?

12:30 p.m. Evaluation and Closing

12:45 p.m. Adjourn

ACCREDITATION

AMA PRA Category 1™

This activity has been planned and implemented in accordance with the accreditation requirements and policies of the Accreditation Council for Continuing Medical Education (ACCME) through the joint providership of Billings Clinic and Logan Health.

Billings Clinic is accredited by the Accreditation Council for Continuing Medical Education (ACCME) to provide continuing medical education for physicians.

Billings Clinic designates this Live activity for a maximum of **8.25 AMA PRA Category 1 Credit(s)™**. Physicians should claim only the credit commensurate with the extent of their participation in the activity.

Nursing Continuing Professional Development/Continuing Nurse Education Credit

To receive 1.25 nursing contact hours for the nursing preconference, participants must attend 80% and complete an evaluation.

To receive 4.5 nursing contact hours for the 11th Annual Updates in Cardiovascular and Pulmonary Disease – Day 1, participants must attend 80% and complete an evaluation.

To receive 4.0 nursing contact hours for the 11th Annual Updates in Cardiovascular and Pulmonary Disease - Day 2, participants must attend 80% and complete an evaluation.

Logan Health is approved as a provider of nursing continuing professional development by the Montana Nurses Association, an accredited approver with distinction by the American Nurses Credentialing Center's Commission on Accreditation.

There are no relevant financial relationships with ineligible companies for those involved with the ability to control the content of this activity. All relevant financial relationships have been mitigated.

ACTIVITIES IN THE AREA

The Flathead Valley has a wide array of activities for individuals and families to experience. From hiking The Whitefish Trail or in Glacier National Park to boating on Whitefish Lake or Flathead Lake, there are activities to suit all participants.

To learn more about extracurricular activities, please visit the following websites:

nps.gov/glac/planyourvisit/gtsrticketedentry.htm

explorewhitefish.com/things-to-do

kalispellchamber.com/kalispell-montana