



# GUIDE TO SERVICES

April 2024

**LOGAN**  
HEALTH

# KEY CONTACTS

Thank you for choosing Logan Health for the care of your patients. This reference guide is designed to assist you in accessing our broad range of medical and surgical specialties.

## LOGAN HEALTH ONE CALL

**(833) LOGAN4U | (833) 564-2648**

Our team of registered nurses is available 24/7 to facilitate timely communication for acute telemedicine consults, provider-to-provider consults, direct admissions, and transfers. The One Call team partners with A.L.E.R.T. and specialty transport teams to coordinate flight and ground transports as needed.

## LHMC RN TRIAGE

**(406) 890-7272**

LHMC RN Triage is available 7 days a week, 8 a.m. to 7 p.m., including holidays to evaluate health concerns and connect you with available resources.

## ASSIST

**(406) 758-1437**

The ASSIST program helps connect patients with community resources including financial assistance, meals, social service needs, home care, transportation and more.

# TABLE OF CONTENTS

<b>Ambulatory Surgery Centers .....</b>	<b>7</b>
<b>Assisted Living .....</b>	<b>7</b>
<b>Behavioral Health.....</b>	<b>7-8</b>
<b>Hospitals &amp; Facilities .....</b>	<b>8-11</b>
<b>Long Term Care .....</b>	<b>12</b>
<b>Primary Care .....</b>	<b>12-16</b>
<b>Rehabilitation.....</b>	<b>17-18</b>
<b>School-Based Health Centers .....</b>	<b>19</b>
<b>School-Based Mental Health.....</b>	<b>19, 20</b>
<b>Specialty Care .....</b>	<b>20-28</b>
Breast Center.....	20
Digestive Center.....	20
Cardiopulmonary Rehabilitation.....	21
Endocrinology & Infectious Disease .....	21
Genetics .....	21
Heart & Lung.....	22
Hematology & Oncology .....	22
Maternal-Fetal Medicine .....	23
Nephrology .....	23
Neuroscience & Spine.....	23-24
OB/GYN.....	24
Occupational Medicine .....	24
Orthopedics & Sports Medicine.....	25
Palliative Medicine.....	25
Radiation Oncology .....	26
Rheumatology.....	26
Specialty Care Clinics.....	26-27
Surgical Clinics .....	27-28
Urology .....	28
Women’s Care.....	28
Wound Care .....	28
<b>Specialty Care – Pediatric .....</b>	<b>29</b>
<b>Support Services.....</b>	<b>30-31</b>

# ABOUT LOGAN HEALTH

Logan Health is a nonprofit, 590-bed health system in Montana. While the main medical campus is located in Flathead County, Logan Health draws from a total service area covering 20 counties, nearly 50,000 square miles and a population of nearly 700,000. The health system consists of six hospitals, more than 68 provider clinics and a host of other health care services, including the nation's first rural air ambulance service (A.L.E.R.T.), which it has maintained for more than 40 years. More than 4,800 physicians, nurses, health care professionals and support staff work together to provide patients and their families with a positive, proactive, patient-centered experience. Founded in 1910, Logan Health has provided exceptional care for more than 100 years to the communities it serves. Throughout its history, the organization has continued to grow and evolve with the growth and changing needs of the communities it serves.

## 590 TOTAL BEDS

Logan Health  
Medical Center: 150

Logan Health  
Behavioral Health: 40

Logan Health  
Children's: 30

Logan Health  
Brendan House: 110

Logan Health  
Whitefish: 25

Logan Health  
Chester: 25

Logan Health Chester  
Assisted Living: 18

Logan Health Conrad: 20

Logan Health Care  
Center Conrad: 59

Logan Health  
Cut Bank: 20

Logan Health Shelby: 21

Logan Health Care  
Center Shelby: 32

Logan Health Assisted  
Living Shelby: 40

**396**  
physicians

**193**  
advanced  
practice  
providers

**4,514**  
employees

**68**  
outpatient  
clinics

## CORE SERVICES

Cancer Care

Heart & Lung

Neuroscience  
& Spine

Orthopedics &  
Sports Medicine

Surgical Services

Women's  
& Children's

Behavioral Health

Primary Care



# REGIONAL OUTREACH

Logan Health has Regional Specialty Care Clinics in Columbia Falls, Bozeman, Eureka, Great Falls, Helena, Libby, Missoula, Polson and Whitefish. In addition, more than 80 specialty care providers travel to these and other Montana communities to provide local access to specialty care.



## BOZEMAN

Endocrinology\*  
Gastroenterology\*  
Hematology/Oncology\*  
Neurology\*  
Neurosurgery\*  
Physical Med & Rehab\*  
Rheumatology\*  
Surgery\*  
Surgical Oncology

## CHESTER

General Surgery

## COLUMBIA FALLS

Cardiology  
Orthopedics  
Surgery  
Urology

## CONRAD

Gastroenterology  
General Surgery  
Pediatrics  
Sleep Medicine

## CUT BANK

Cardiology  
Diabetes Education  
Gastroenterology

General Surgery  
Neurology  
Orthopedics  
Pediatrics

## EUREKA

Cardiology  
Endocrinology  
General Surgery  
Orthopedic Surgery  
Pulmonology  
Urology

## GREAT FALLS

Allergy, Asthma and Immunology\*  
Endocrinology\* (peds and adult)  
Gastroenterology\*  
Hematology/Oncology\*  
Neurology\*  
Neurosurgery\* (peds and adult)  
Occupational Medicine  
Physical Med & Rehab\*  
Psychiatry\*  
Rheumatology\*  
Surgery\*  
Surgical Oncology

## HELENA

Allergy, Asthma and Immunology\*  
Endocrinology\*  
Gastroenterology\*  
Hematology/Oncology\*  
Neurology\*  
Neurosurgery\*  
Physical Med & Rehab\*  
Rheumatology\*  
Surgery\*  
Surgical Oncology

## LIBBY

Cardiology  
Nephrology  
Neurology  
Orthopedics  
Palliative Medicine  
Pulmonology  
Sleep Medicine  
Urology

## MISSOULA

Endocrinology\*  
Gastroenterology\*  
Hematology/Oncology\*  
Neurology\*

Neurosurgery\* (peds and adult)  
Physical Med & Rehab\* (peds and adult)  
Psychiatry\*  
Rheumatology\*  
Surgery\*  
Surgical Oncology

## PLAINS

Cardiology  
Diabetes Education  
Neurology

## POLSON

Cardiology  
Dermatology  
Diabetes Education  
Endocrinology  
Gastroenterology  
Nephrology  
Neurology  
Neurosurgery  
OB/GYN  
Ophthalmology  
Orthopedics  
Pain Management  
Pediatrics

Pulmonology  
Sleep Medicine  
Urology

## RONAN

Neurology  
Pulmonary

## SHELBY

Cardiology  
General Surgery  
OB/GYN  
Pulmonology  
Sleep Medicine

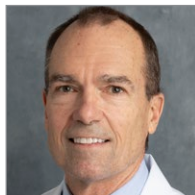
## WHITEFISH

General Surgery  
Neurosurgery  
Orthopedics  
Occupational Therapy

\* pediatric specialty

# NEW LOGAN HEALTH PROVIDERS

New providers hired between December 1, 2023 and March 15, 2024.



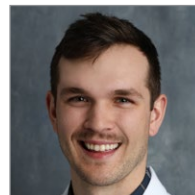
**Douglas Berglund, MD**  
*Colorectal Surgery*



**Edward Jones II, MD, FACS**  
*Surgery*



**Greg Bayse, APP**  
*Emergency Medicine*



**Adam C. Bradley, PA-C**  
*Nephrology*



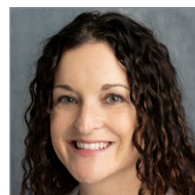
**William Hunt, PA-C**  
*Neurology*



**Shane Jenson, FNP**  
*Family Medicine*



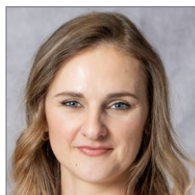
**Vicki Lear, PA-C**  
*Emergency Medicine*



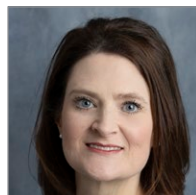
**Allison Taylor, FNP-C**  
*Occupational Medicine*



**Juliana Thompson, PA-C**  
*Orthopedic Surgery*



**Ariel Weishaar, FNP**  
*Family Medicine*



**Stephanie Williams, DNP**  
*Breast Oncology*



**Laura Wittman, ENP-C, FNP-C**  
*Emergency Medicine*

Photo not yet available:

**Alison M. Armstrong, MD**  
*Pediatric Hospitalist*

**Nicholas A. Sloan, DO**  
*Psychiatry*

**Judy Smith, FNP**  
*Family Medicine*

**Montana is rated 2023's #1 Best State to Practice Medicine!** – [Wallethub.com](https://www.wallethub.com)

Logan Health is currently seeking:

## PHYSICIANS

- Gastroenterologist
- Interventional Cardiologist
- Neurologist
- Psychiatrist - Child & Adolescent
- Family Medicine Physician (Eureka, Kalispell, Polson)
- Osteopathic Family Medicine
- Pulmonary Critical Care Physician

- Medical Oncologist
- Rheumatologist
- Vascular Surgeon
- Occupational Medicine
- Palliative Care
- Pediatric Gastroenterologist
- Hospitalist

## ADVANCED PRACTICE PROVIDERS

- NNP
- Emergency Department – Cut Bank
- Family Medicine – Eureka
- Family Medicine – Cut Bank
- Family Medicine/Emergency Medicine - Chester
- Hematology/Oncology
- Neurosurgical
- Orthopedic

To learn more please contact: Jared Wilson, Physician Recruiter, (406) 751-5318 · [jwilson@logan.org](mailto:jwilson@logan.org)

# AMBULATORY SURGERY CENTERS

Logan Health Surgery Center – Kalispell

111 Sunnyview Lane

PHONE: (406) 858-8205

FAX: (406) 758-5123

Logan Health Surgery Center – Polson

106 Ridgewater Drive, Suite B

PHONE: (406) 883-1911

## ASSISTED LIVING

Logan Health Assisted Living – Shelby

111 2nd Street South

PHONE: (406) 434-3290

FAX: (406) 434-3291

Logan Health Assisted Living – Chester

111 6th Street West

PHONE: (406) 759-5787

FAX: (406) 759-5012

## BEHAVIORAL HEALTH

*Logan Health offers additional counselors in some of our clinics and area schools.*

Logan Health Behavioral Health – Kalispell

200 Heritage Way

PHONE: (406) 756-3950

FAX: (406) 756-3857

### ADULT PSYCHIATRY

Todd A. Shumard, MD

### PEDIATRIC PSYCHIATRY

Constance Mash, MD

Tyler Hill, DO

Logan Health Behavioral Health Clinic – Whitefish

2004 Hospital Way

PHONE: (406) 862-1030

FAX: (406) 862-1556

### PSYCHIATRY

John Muir, MD  
Ruth Myers, MD  
Greta Beil, PA

Michael Edwards, LCPC, LAC  
De Gamroth, LCSW  
Jennifer Lewis, NP

# BEHAVIORAL HEALTH

Logan Health Newman Center Adult – Kalispell

160 Heritage Way

## PSYCHIATRY

PHONE: **(406) 758-3244**

FAX: **(406) 751-8270**

Joseph H. Boyle, MD  
Mary Ann Evans, MD  
Lori Gerber, LCSW

Cory Kohm, LCPC  
Wendy Monen, LCSW

Logan Health Newman Center Pediatric – Kalispell

75 Claremont St., Suite C

## PSYCHIATRY

PHONE: **(406) 758-5155**

FAX: **(406) 758-5166**

Tyler Hill, DO  
Daniel A. Korb, MD  
M. Todd Rutherford, MD  
Lindsey Jordan, LCSW

Kelsey Moore, PMHNP  
Trishia Pollard, LCPC  
Roxanne Taylor, LCSW

# HOSPITALS & FACILITIES

Logan Health Children’s – Kalispell

350 Sunnyview Lane

PHONE: **(406) 752-5111**

Logan Health Children’s, a 190,000 square foot 501(c)(3), non-profit facility, was created to provide local access to high quality pediatric specialty care close to home, including the largest group of fellowship-trained pediatric specialists in the state. Highly skilled, highly trained medical staff, nurses, therapists, social workers and other health care professionals deliver pediatric care in an environment appropriate for children. With 30 inpatient beds including a Neonatal Intensive Care Unit, a Pediatric Intensive Care Unit and an acute care pediatric unit as well as dedicated spaces for family caregivers, Logan Health Children’s has become a pediatric healthcare destination, saving the lives and improving the health of children across Montana.

## NICU

Victor Levy, MD  
Srinivasan Kasturirangan, MD  
Brenda Morris, MD

Jessie M. Cady-Kauffman, NNP-BC  
Becky Frogge, NNP

## PICU

Robert Mansfield, MD  
Margaret A. Satchell, MD

Timothy R. Stidham, MD  
Steven Yung, MD

## PEDIATRICS

Paul Berkram, MD  
Brian P. Bost, MD  
Samantha B. Dooley, MD

Courtney Stout Paterson, MD  
Jordan Vaughan, MD  
Crystal D. Zomer, MD



# HOSPITALS & FACILITIES

**Logan Health – Chester**

**315 West Madison Avenue**

PHONE: **(406) 759-5181**

Logan Health – Chester is a 501(c)(3), non-profit hospital. The hospital serves Liberty County and surrounding communities providing emergency care, acute care, laboratory services, imaging services, rehabilitation, skilled swing bed services, long term care, mobile MRI, mammography and dexa and more.

**Logan Health – Conrad**

**805 Sunset Blvd.**

PHONE: **(406) 271-3211**

FAX: **(406) 271-3917**

Logan Health – Conrad is a 20-bed 501(c)(3), non-profit community Critical Access Hospital located in Conrad, Montana. The hospital serves Pondera County and surrounding communities providing emergency care, acute care, laboratory services, imaging services, rehabilitation, skilled swing bed services, sleep studies, mobile MRI, mammography, endoscopy and more.

**Logan Health – Cut Bank**

**802 2nd Street SE**

PHONE: **(406) 873-2251**

FAX: **(406) 873-3118**

Logan Health – Cut Bank is a 20-bed 501(c)(3), non-profit community Critical Access Hospital located in Cut Bank, Montana. The hospital serves Glacier County and surrounding communities providing emergency care, acute care, behavioral health, laboratory services, imaging services, rehabilitation, skilled swing bed, mobile MRI, mammo and dexa, GI scopes, nursing outpatient services and more.

# HOSPITALS & FACILITIES

Logan Health Medical Center – Kalispell

310 Sunnyview Lane

PHONE: (406) 752-5111

Logan Health Medical Center, the flagship hospital of Logan Health, is a 150-bed 501(c)(3), non-profit acute care regional referral center, offering a full spectrum of healthcare services one might only expect of a large metropolitan area. Logan Health Medical Center is especially well known for its programs in cardiovascular care, oncology, neuroscience and spine care, orthopedics, women's health, surgical care, pediatrics and behavioral health provided by more than 500 physicians and 4,000 employees. Steeped in a rich and rewarding history, Logan Health Medical Center believes in advancing medicine and enhancing care for all the communities and people we serve.

## HOSPITALISTS

PHONE: (406) 751-6787

FAX: (406) 751-3068

Geoffrey A. Baker, DO  
Michael G. Barker, MD  
Melissa L. Basford, MD  
Jeremy S. Bedtelyon, MD  
Paul M. Berkram, MD  
Peyton Faganel, DO  
Jeff Halleck, MD  
Deborah Hoffman, MD  
Katherine V. Kasavana, MD  
Chase Lambrecht, DO  
Tony L. Lloyd, MD  
Rachelle W. Losey, MD  
Jeffery Lull, DO  
Mitchell C. Marzo, MD  
Laura K. Mirch, MD

Mark G. Ochenrider, MD  
Rob K. Perkins, MD  
Alexandria Rutherford, MD  
Daniel C. Short, DO  
Laurel Skeek, MD  
Linda Sterry, DO  
Mark T. Welch, MD  
William Woodberry, MD  
Casey C. Cole, PhD, DNP  
Chelsea Dunshee, NP-C  
Maren Erpelding,  
MSN, APRN, AGACNP-BC  
Anjanette Ostrom, AGACNP-BC  
Laura L. Wharton, FNP-C

## NEURO HOSPITALISTS

Tanner Ferderer, MD  
Melanie A. Klawiter, MD  
Bret D. Lindsay, MD

Kurt D. Lindsay, MD  
Sylvia B. Rojas, MD

## INTENSIVISTS

Seth Clemens, MD  
Anthony Dal Nogare, MD  
Sue Fessler, MD  
Deborah Hoffman, MD  
Tim Obermiller, MD

Eric D. Peltz, DO  
Bethany Weiler, MD  
Kendall Babb, NP  
Tyler Wagstaff, PA-C

# HOSPITALS & FACILITIES

Logan Health – Shelby

640 Park Ave.

PHONE: **(406) 434-3200**

FAX: **(406) 434-3257**

Logan Health – Shelby is a 21-bed 501(c)(3), non-profit community Critical Access Hospital located in Shelby, Montana. The hospital serves Toole County and surrounding communities providing emergency care, acute care, skilled swing bed services, outpatient services, outpatient surgeries, laboratory services, imaging services, MRI, mobile mammography, rehabilitation, sleep studies and more.

Logan Health – Whitefish

1600 Hospital Way

Logan Health – Whitefish is a 501(c)(3), non-profit community Critical Access Hospital located in scenic Whitefish, Montana. Logan Health – Whitefish was the first hospital in Montana to be affiliated with Planetree International, a non-profit organization that provides education and information in a collaborative community of healthcare organizations, facilitating efforts to create person centered care in healing environments. The hospital and its outreach clinics serve Flathead and Lincoln counties.

## HOSPITALISTS

PHONE: **(406) 863-3500**

Jeremy S. Bedtelyon, MD  
Stella Hutchins, MD

Mitchell C. Marzo, MD  
Elizabeth White, MD

# LONG TERM CARE

Logan Health Brendan House – Kalispell

350 Conway Drive

PHONE: (406) 751-6500

FAX: (406) 751-6544

Logan Health Care Center – Conrad

805 Sunset Blvd.

PHONE: (406) 271-2252

FAX: (406) 271-2899

Logan Health Care Center – Shelby

630 Park Avenue

PHONE: (406) 434-3260

FAX: (406) 434-3274

# PRIMARY CARE

*For a list of Walk-In Care locations and hours, please visit [logan.org/walkincare](http://logan.org/walkincare).*

Logan Health Children’s Primary Care

Kalispell

**1273 BURNS WAY**

PHONE: (406) 752-8300

FAX: (406) 752-3542

John S. Cole, MD  
Lynn A. Dykstra, MD  
Kenneth J. Graham, MD  
Michael A. Schwaller, MD

Valerie A. Beebe, APRN  
Kristin Melli, NP  
Heather R. Riley, PNP  
Jenna L. Upham, FNP-BC

Logan Health MD Direct (Concierge Medicine)

Kalispell

**60 FOUR MILE DRIVE**

PHONE: (406) 858-6849

FAX: (406) 607-4594

Douglas Nelson, MD

Laura Sage, MD

Logan Health Primary Care – Bigfork

**8299 MT HWY. 35**

PHONE: (406) 837-5541

FAX: (406) 837-5543

Clay I. Campbell, MD  
Dana C. Ducote, MD

Martha A. Jessop, APRN  
Joshua R. Russell, PA-C



# PRIMARY CARE

## Logan Health Primary Care – Columbia Falls

### 1850 9TH ST. WEST

PHONE: **(406) 892-3206**

FAX: **(406) 758-3264**

Eric M. Brandeberry, MD  
Tanya Mitchell, DO

Haley Ballinger, PA-C

### 1675 TALBOT RD.

*Walk-In Care  
available*

PHONE: **(406) 892-3208**

FAX: **(406) 892-4497**

Amy Dear-Ruel, MD  
Cameron Gardner, MD  
Derek Gedlaman, DO  
Jason Leep, MD  
Katiera Rivera, DO  
Chelsie Russig, DO  
Brittany Coburn, NP

Stephanie Conners, FNP  
Rob Gordon, MSW, LCSW  
Darwin Hurst, NP  
Daniel Masar, FNP  
Melissa Pursell, ARNP  
Jenny Streich, NP

## Logan Health Primary Care – Eureka

### 304 OSLOSKI RD

*Walk-In Care  
available*

PHONE: **(406) 297-3145**

FAX: **(406) 297-3364**

Julie Cross, DO  
Edward Stein, MD  
Travis Schelling, PA-C

Rodney Schmidt, PA-C  
Michelle Smith, NP

## Logan Health Primary Care – Kalispell

### 70 VILLAGE LOOP

PHONE: **(406) 752-8877**

FAX: **(406) 756-3245**

Kelly Berkram, MD  
Ruben Hipolito, MD  
Kenneth Lindsey, MD

Timothy Stutzman, MD  
Michele Taylor, DO  
Jamie Corwin, NP

### 160 HERITAGE WAY

*Walk-In Care  
available*

PHONE: **(406) 752-8433**

FAX: **(406) 756-6768**

Jonathan M. Anderson, MD  
Rebecca Arneson, DO  
Ivory D. Drendel, MD  
Brendon P. Smith, DO  
John M. Tollerson, DO  
Anne E. Armstrong, PA-C  
Brittan Austin-Hammer, PA-C

Justin Barnett, NP  
Mae Olivia Berentson, NP  
Jessica C. Glover, NP  
Douglas S. Marbarger, PA-C  
Christine Miller, NP  
Julia M. Muonio, NP-C

# PRIMARY CARE

## Logan Health Primary Care – Kalispell, cont.

### 705 6TH AVENUE EAST

PHONE: **(406) 755-7366**

Herman O. Lyle, MD  
Kelly L. Redfield, MD  
Sarah P. Robinson, MD

FAX: **(406) 755-7277**

Josephine B. Wright, MD  
Elizabeth L. King, NP  
Melanie M. Zander, NP

### 1280 BURNS WAY

PHONE: **(406) 755-5266**

Kevin A. Kropp, DO  
Daphne Hall, FNP-BC

FAX: **(406) 755-0228**

Amy M. Ramer, FNP-C

### 1287 BURNS WAY

*Walk-In Care  
available*

PHONE: **(406) 752-8120**

Christopher H. Gill, MD  
Daniel D. Hanba, MD  
Hilary A. Hanba, MD (pediatrics)  
Elizabeth Jaffe, M  
Kyle E. Austin, PA-C (walk-in care)  
Laura J. Barker, PA-C  
Crystal Bridges, PA (walk-in care)  
Seamus Burke, PA  
Jerilyn R. Bodey, FNP (walk-in care)

FAX: **(406) 752-8134**

Courtney Day, PA (walk-in care)  
Lauren Gary, FNP-C  
Dirk M. Gillette, PA-C (walk-in care)  
Michelle L. Johnson, PA-C  
Amber Keefer, NP  
Kevin M. Oberholser, PA-C (walk-in care)  
Katherine J. Schneidmiller, PA-C  
Linda Boylin-Starks, NP (walk-in care)  
Jennifer R. Steele, FNP-BC

## Logan Health Primary Care – Lakeside

### 306 STONER LOOP

PHONE: **(406) 844-0541**

Clay I. Campbell, MD  
Mona L. Cuthbert, MD

FAX: **(406) 844-0680**

Chelsey L. Spence, DO  
Andrea N. Meiers, PA-C

## Logan Health Primary Care – Polson

### 106 RIDGEWATER DR.

*Walk-In Care  
available*

PHONE: **(406) 883-3200**

Daniel P. Rausch, MD  
Adam T. Smith, DO  
Terry A. Smith, DO  
Heidi M. Woxland, DO  
Shamyne Dumouchel, NP (digestive health)

FAX: **(406) 883-9483**

Monica Franklin, FNP-C  
Taylor M. Lies, PA-C (cardiology)  
David Nieman, PA-C  
Brian A. Rick, PA-C (walk-in care)  
Cindy R. Young, DNP, FNP

# PRIMARY CARE

## Logan Health Rural Health Clinic – Chester

**418 WEST MONROE**

PHONE: **(406) 759-5194**

FAX: **(406) 759-5105**

Dan Davis, MD  
Patrick Armstrong, PA-C  
Tim Blair, FNP-BC

Frank Towsley, PA-C  
Darren Young, PA-C

## Logan Health Rural Health Clinic – Conrad

**809 SUNSET BLVD.**

PHONE: **(406) 271-3231**

FAX: **(406) 271-3576**

Jay Taylor, MD  
David Arends, PA-C  
Kylee Bakker, DNP, APRN, PCP-PC

Ashton Hofstad, FNP-C  
Heather Johns, DNP

## Logan Health Rural Health Clinic – Cut Bank

**226 9TH AVE. SE**

PHONE: **(406) 873-5507**

FAX: **(406) 873-3133**

Henry “Hank” Clay, MD  
Kylee Bakker, DNP, APRN, PCP-PC

Ashley Kimmet, LCPC (behavioral health)  
Claire Reynolds, FNP-C

## Logan Health Clinic – Shelby

**640 PARK AVE.**

PHONE: **(406) 966-7040**

FAX: **(406) 434-3254**

Molly Asper, AGNP-C  
Shane Jenson, FNP-C, RN PMGT-BC

Ariel Weishaar, FNP-C

# PRIMARY CARE

## Logan Health Walk-In Care

## West Glacier

### 100 REA ROAD

Open Seasonally:  
Memorial Day-Sept. 30

PHONE: **(406) 888-9924**

Linda "Lorraine" Dupree, PA-C  
Catherine Love, FNP-C

FAX: **(406) 888-9927**

Michael Seymour, PA  
Judith Smith, FNP-C

## Logan Health Walk-In Care

## Base Lodge – Whitefish

### 1045 GLADES DRIVE

Open Seasonally:  
December-April

PHONE: **(406) 862-1717**

Linda "Lorraine" Dupree, PA-C  
Catherine Love, FNP-C

FAX: **(406) 862-1718**

Michael Seymour, PA  
Judith Smith, FNP-C

## Logan Health On-Demand Virtual Care

PHONE: **(406) 858-7978**

Logan Health's virtual, on-demand visits are a fast, convenient alternative to an in-person visit with Logan Health providers. On-demand virtual care visits can address many health conditions and are available **Monday through Friday from 8:00 a.m. to 5:00 p.m.** for adults and children.

## Montana Pediatrics

PHONE: **(406) 272-4631**

[montanapediatrics.org](http://montanapediatrics.org)

Montana Pediatrics is Logan Health's innovative pediatric telemedicine program that complements a family's medical home with pediatric-specific after-hours urgent care. Available **Monday-Friday from 6:00 p.m. to 7:30 a.m. and 24-hours on Saturday/Sunday**, Montana Pediatrics is working to ensure no family in Montana ever feels alone with a worry about their child's health.



# REHABILITATION

## Logan Health Rehabilitation – Chester

315 West Madison

### PHYSICAL AND OCCUPATIONAL THERAPY

PHONE: **(406) 759-6551**

Kevin Criswell, DPT  
Krista Keiper, OT

FAX: **(406) 759-5071**

Kerry Mattson, PTA  
Sally Scott, DPT

## Logan Health Rehabilitation – Columbia Falls

235 Nucleus Avenue

### PHYSICAL THERAPY

PHONE: **(406) 892-2777**

Abby Carpenter, PT, DPT, CERT-DN  
Stacy Dolan, PT

FAX: **(406) 892-3022**

Christy Wells, PT

## Logan Health Rehabilitation – Conrad

805 Sunset Blvd.

### PHYSICAL, SPEECH AND OCCUPATIONAL THERAPY

PHONE: **(406) 271-2222**

Karen Brunner, PTA  
Leandra Gebhardt, DPT  
Amy Gilbertson, OT  
Dagni Gleason, PT

FAX: **(406) 271-5765**

Stephen Katzer, MSPT  
Rebecca Oylear, SLP  
Heather Stewart, PTA

## Logan Health Rehabilitation – Cut Bank

802 Second Street SE

### PHYSICAL THERAPY

PHONE: **(406) 873-3670**

Raymond Dunne, PT  
Bryan Moore, PTA

FAX: **(406) 873-2385**

Justin Perry, DPT  
Heather Stewart, PTA

## Logan Health Rehabilitation – Eureka

1343 Highway 93 North

### PHYSICAL AND OCCUPATIONAL THERAPY

PHONE: **(406) 297-3915**

Sharon Bell, DPT  
Mark Anthony Fink, PT  
Jodi Finochio, PTA

FAX: **(406) 297-3919**

Erica Kepner, DPT  
Lisa Spors-Murphy, OT

# REHABILITATION

## Logan Health Rehabilitation – Kalispell

111 Sunnyview Lane

### PHYSICAL THERAPY

PHONE: **(406) 607-8050**

FAX: **(406) 751-4526**

Jared Buntin, PT, DPT, ATC  
Danielle Croft, PT, DPT

Brianna Erickson, PT, DPT

## Logan Health Rehabilitation – Kalispell

205 Sunnyview Lane

### PHYSICAL, SPEECH AND OCCUPATIONAL THERAPY

PHONE: **(406) 751-4520**

FAX: **(406) 751-4526**

Kristin Allexan, OTR/L  
Bre Buntin, PT, DPT  
Richard Greer, PT, DPT  
Beth Gunlikson, MPT  
Pat Heil, PT, MAPT, OCS, CMTPT  
Tracey Hornby, PT  
Alisa Kristensen, PT, DPT

Lacey Kvam, MS, CCC-SLP  
Caroline Lawhead, OTR/L  
Jacklyn Z. McDonald, MS, CCC-SLP  
Marrene Peacher, OTR/L  
Tonda Smit, MS, CCC-SLP  
Sandy Thatcher, PT, MPT  
Denise L. Zander, OTR/L, CHT

## Logan Health Rehabilitation – Lakeside

306 Stoner Loop

### PHYSICAL THERAPY

PHONE: **(406) 844-0446**

FAX: **(406) 751-4526**

## Logan Health Rehabilitation – Polson

101 Whitewater Place, Suite A

### PHYSICAL THERAPY

PHONE: **(406) 883-7450**

FAX: **(406) 758-3295**

Kristina Bieber, PTA  
Amy Fischer, MPT

Marcia St. Goddard, PT, DPT, CSCS, CES

## Logan Health Rehabilitation – Shelby

640 Park Avenue

### PHYSICAL, SPEECH AND OCCUPATIONAL THERAPY

PHONE: **(406) 434-3234**

FAX: **(406) 434-3252**

Miranda Dupree, PT  
Jennifer Gruber, PT  
Gwen Heaton, PT

Alex Kastner, PTA  
Rebecca Oylear, SLP

# SCHOOL-BASED HEALTH CENTERS

Logan Health and area schools are partnering to create access to quality health care without needing to leave their school campus. Services available to students, staff and faculty include preventive care, acute health care, chronic care, mental health services and health education. We currently have school-based health centers in Columbia Falls schools, Bigfork schools, Somers Middle School, Lakeside Elementary School and Cayuse Prairie School.

PHONE: **(406) 858-3453**

**(406) 892-3208** (Columbia Falls)

Brittany Coburn, FNP-C  
Rebecca Milligan, MSN,  
APRN-FNP, PCCN

Hannah Montague, PA

# SCHOOL-BASED MENTAL HEALTH

Logan Health's School-Based Mental Health service is available for all students and their families as well as school staff and their families at any of our school-based mental health clinic sites. We have clinics in the following schools:

## BIGFORK

Bigfork Elementary/Middle Schools	Kerry Ford, LCPC	PHONE: <b>(406) 837-7412, x 5025</b>
Bigfork Middle/High Schools	Josh Inabnit, LCPC	PHONE: <b>(406) 837-7412, x 4023</b>

## COLUMBIA FALLS

Columbia Falls Junior High	Julie Stetter, LCSW	PHONE: <b>(406) 892-6530, x 4113</b>
Columbia Falls High School	Ellen Barta, LCPC	PHONE: <b>(406) 892-3208</b>
Glacier Gateway Elementary	Stephanie Gordon, LCSW	PHONE: <b>(406) 892-6540</b>
Ruder Elementary	Lorie Lewis, LCSW	PHONE: <b>(406) 892-6570, x 3102</b>

## CUT BANK

Cut Bank Middle/High School	Ashley Kimmet, LCPC	PHONE: <b>(406) 873-5507</b>
-----------------------------	---------------------	------------------------------

## KALISPELL

Edgerton Elementary	Jason Heisey, LCPC, ATR-P	PHONE: <b>(406) 751-4040, x 4037</b>
Elrod Elementary	Ellie McMann, LCSW	PHONE: <b>(406) 751-3600, x 3699</b>
Flathead High School	Hilary Patterson, LCSW	PHONE: <b>(406) 751-3500, x 3654</b>

# SCHOOL-BASED MENTAL HEALTH

## KALISPELL, CONTINUED

Glacier High School	Terri Christy, LCSW	PHONE: <b>(406) 758-8600, x 8647</b>
Hedges Elementary	Kelly A. Shaw, LCPC	PHONE: <b>(406) 751-4090, x 4087</b>
Kalispell Middle School	Heidi Perry, LCPC	PHONE: <b>(406) 751-3400, x 3801</b>
Linderman Education Center	Marian Stuart, LCSW	PHONE: <b>(406) 751-3900, x 3939</b>
Peterson Elementary	Ellie McMann, LCSW	PHONE: <b>(406) 751-3737, x 3762</b>
Rankin Elementary	Marian Stuart, LCSW	PHONE: <b>(406) 300-0655, x 0646</b>
Russell Elementary	Tara Trotter, LCPC	PHONE: <b>(406) 751-3900, x 3898</b>

## SOMERS

Somers Middle School	Josh Inabnit, LCPC	PHONE: <b>(406) 857-3661</b>
----------------------	--------------------	------------------------------

## WHITEFISH

Muldown Elementary	Kevin Ries, LCPC	PHONE: <b>(406) 862-8620</b>
Whitefish Middle School	Christl Stanwood, LCPC	PHONE: <b>(406) 862-8650, x 384</b>
Whitefish High School	Kevin Ries, LCPC	PHONE: <b>(406) 862-8600, x 438</b>

# SPECIALTY CARE

## Logan Health Breast Center – Kalispell

310 Sunnyview Lane

### BREAST SURGERY

PHONE: **(406) 751-6488**

FAX: **(406) 758-3157**

Melissa C. Kaptanian, MD, FACS

Stephanie Williams, DNP, APRN,  
ACNP-BC, AOCNP, CBCN

## Logan Health Digestive Center – Kalispell

320 Sunnyview Lane

### DIGESTIVE HEALTH

PHONE: **(406) 752-7441**

FAX: **(406) 751-8273**

Ramon S. Generoso, MD  
Annie L. Heermans, MD  
Philip E. Jaffe, MD  
William G. Simpson, MD  
Agnieszka Danielewicz, PA-C  
Shamyne Dumouchel, FNP-C

Stephanie Eastburn, PA-C  
Jenna Grilley, PA-C  
Christianne D. Jaffe, APRN-BC  
Nicole Murray, NP  
Barbara Sterry, FNP-BC



# SPECIALTY CARE

## Logan Health Cardiopulmonary Rehabilitation

### CONRAD

805 SUNSET BLVD.

PHONE: (406) 271-3211

FAX: (406) 271-7446

### KALISPELL

205 SUNNYVIEW LANE

PHONE: (406) 751-4504

FAX: (406) 751-4121

### SHELBY

640 PARK AVE.

PHONE: (406) 434-3248

FAX: (406) 434-3221

### WHITEFISH

1600 HOSPITAL WAY

PHONE: (406) 863-3624

FAX: (406) 863-3625

## Logan Health Endocrinology & Infectious Disease Kalispell

430 Windward Way,  
Suite 100

PHONE: (406) 751-5364

FAX: (406) 751-5367

### ENDOCRINOLOGY

Jose' C. de Souza, MD  
M. Irene Feria, MD

Alison E. Schneider, MD

### INFECTIOUS DISEASE

Jeffrey A. Tjaden, MD

## Logan Health Genetics & Genomics – Kalispell

320 Sunnyview Lane

PHONE: (406) 607-8003

FAX: (406) 890-7306

Tiana Pallister, MS, LCGC

Carrie Thompson, DNP, APRN,  
ANP-BC, OCN, ACGN

# SPECIALTY CARE

Logan Health Heart & Lung – Kalispell

350 Heritage Way, Suite 2100

PHONE: **(406) 257-8992**

FAX: **(406) 257-8996**

## CARDIOLOGY

Joshua Dushesne, MD  
Eve Gillespie, MD  
Alexis Harrison, MD  
Joseph Krezowski, MD  
Robert Mitchell, MD  
John Olsen, MD  
Jeffrey Watkins, MD

Desiree Caro, FNP-C  
Renee Iverson, NP  
Emily Kempf, NP  
Kira Kitchens, FNP-C  
Mallery Knoll, PA  
Tessa Skotnicki, PA

## CARDIOLOGY – LIBBY

Nicole D. Haats, FNP

## CARDIOLOGY – POLSON

Taylor Lies, PA-C

## CARDIOTHORACIC SURGERY

John Deel, MD  
Drew Kirshner, MD  
Cheryl Green, PA-C

Samantha Short, PA-C  
Alyssa Stone, PA-C

## ELECTROPHYSIOLOGY

Jonathan Matt Brunson, MD

Aimee Zupicich, AGNP

## INTERVENTIONAL CARDIOLOGY

Nathaniel Hall, MD

Joshua Vogt, MD

## PULMONOLOGY

Seth Clemens, MD  
Sue Fessler, MD  
Timothy Obermiller, MD

Frederick Pascual, MD  
Bethany Weiler-Lisowski, MD  
Keelin Sweeney, NP

## SLEEP MEDICINE

Deborah Hoffman, MD  
Frederick Pascual, MD

Dawn Peters, CFNP  
Aaron Pitman, PA-C

## STRUCTURAL HEART

John Deel, MD  
Drew Kirshner, MD

Joshua Vogt, MD  
Kira Kitchens, FNP-C

Logan Health Hematology & Oncology – Kalispell

350 Heritage Way, Ste 1100

## HEM/ONC

PHONE: **(406) 752-8900**

FAX: **(406) 752-8909**

Elise N. Anderes, MD  
Jose Ness, MD  
Ryan P. Roop, MD  
Peter Wagner, MD

Edward Damron, NP  
Dawn M. Murray, NP  
Kandis Strickland, NP

# SPECIALTY CARE

## Logan Health Maternal-Fetal Medicine – Kalispell

210 Sunnyview Lane, Ste 103

### MATERNAL-FETAL MEDICINE

PHONE: **(406) 257-3872**

Kurt Hales, MD  
Juan L. Martinez-Poyer, MD

FAX: **(406) 758-7077**

Peter Nielsen, MD  
Mallory Novack, MD

## Logan Health Nephrology – Kalispell

75 Claremont Street, Suite H

### NEPHROLOGY

PHONE: **(406) 752-7406**

Gabor Bodonyi-Kovacs, MD  
Tobin J. Hoppes, MD  
Robert M. Valleau, DO

FAX: **(406) 752-7544**

Adam Bradley, PA-C  
Jillian Cullison, MPAS, PA-C  
Meghan E. DeGroot, FNP-BC

## Logan Health Neuroscience & Spine – Kalispell

200 Commons Way

### NEUROLOGY

PHONE: **(406) 752-5095**

Tanner L. Ferderer, MD  
Melanie A. Klawiter, MD  
Bret D. Lindsay, MD

FAX: **(406) 751-3079**

Kurt D. Lindsay, MD  
Sylvia B. Rojas, MD  
Paul B. Coats, NP

### NEUROSURGERY

PHONE: **(406) 752-5170**

Joshua Krass, DO  
Thomas C. Origitano, MD, PhD  
Joseph G. Sramek, MD  
Jessica A. Christensen, PA-C

FAX: **(406) 752-5210**

Robert J. Griffin, PA-C  
Stacia Shimanek, PA-C  
Erika Wright, PA-C

## Logan Health Neuroscience & Spine – Kalispell

205 Sunnyview

### PHYSICAL MEDICINE & REHAB

PHONE: **(406) 758-7035**

Austin R. Johnston, DO  
Mark D. Weber, MD

FAX: **(406) 758-7069**

Justin L. Shobe, PA-C  
Kaitlyn R. Sterry, PA-C

# SPECIALTY CARE

Logan Health Neuroscience & Spine – Kalispell 245 Windward Way, Ste 101

## WELLNESS & PAIN MANAGEMENT

PHONE: **(406) 756-8488**

Anna B. Coles, MD  
Jennifer J. Jamrog, DO  
N. Camden Kneeland, MD  
Timothy Corson, PsyD  
Chris Nadasi, PhD

FAX: **(406) 758-3234**

Garren Allred, PT  
Brenda L. Anderson, PA-C  
Eric J. Belanger, PA-C  
Lon Savik, DC  
Matthew T. Zemacke, PA-C

Logan Health OB/GYN – Kalispell 210 Sunnyview Lane, Suite 201

## OB/GYN

PHONE: **(406) 858-8200**

Lauren Cox, MD  
Thomas deHoop, MD  
Jenna Huff, MD

FAX: **(406) 858-6803**

Erin Lauer, MD  
Nicole Mandala, MD

## MIDWIVES

PHONE: **(406) 751-8009**

Kiley Wensel, CNM

FAX: **(406) 758-3269**

## LABORIST

PHONE: **(406) 751-8009**

John Lavin, MD

FAX: **(406) 758-3269**

Logan Health Occupational Medicine 75 Claremont, Suite F

## OCCUPATIONAL MEDICINE

PHONE: **(406) 751-4189**

Thomas A. McClure, MD, FACOEM

FAX: **(406) 751-4527**

Allison Taylor, FNP-C

# SPECIALTY CARE

Logan Health Orthopedics & Sports Medicine – Kalispell 350 Heritage Way, Ste 2100

## ORTHOPEDICS & SPORTS MEDICINE

PHONE: **(406) 752-6784**

Nate Fogel, MD  
Stephen Gregorius, MD  
Timothy Joyce, MD  
Mark Magill, MD  
Karen Perser, MD  
Scott W. Rogers, MD  
Heidi C. Shors, MD  
Kim Dean Stimpson, MD  
Benjamin D. Ward, MD

FAX: **(406) 756-4111**

Jeffrey L. Dukeman, PA-C  
Edward V. Eve, PA-C  
Anna Iwersen, PA-C  
Shannon K. Lee, PA-C  
Julie C. Ponti, PA-C  
Danielle Shepherd, PA-C  
Ross R. Van Brunt, PA-C  
Johnny L. Willcut, FNP

Logan Health Orthopedics & Sports Medicine – Kalispell 111 Sunnyview Lane

## ORTHOPEDICS & SPORTS MEDICINE

PHONE: **(406) 752-7900**

Matthew Bailey, MD  
Joseph Bergman, MD  
Stephen Gregorius, MD  
Stanley Makman, MD  
Ned Wilson, MD

FAX: **(406) 758-3266**

Greg Danielson, PA-C  
Timothy DeVries, PA-C  
Randy Dugan, PA-C  
Steven Trimble, PA-C

Logan Health Palliative Medicine – Kalispell 350 Heritage Way, Suite 1100

## PALLIATIVE MEDICINE

PHONE: **(406) 751-6725**

Isaac M. Bromberg, MD  
Kerry J. Eby, MD  
Deborah L. Lessmeier, MD  
Jessica Cromie, FNP-BC

FAX: **(406) 758-5170**

John D. Erickson, NP  
Anjanette Ostrom, AGACNP-BC  
Laura M. Pierson, FNP-C  
Sara Richardson, AGCNS-BC



# SPECIALTY CARE

## Logan Health Radiation Oncology – Kalispell

343 Sunnyview Lane

**RADIATION ONCOLOGY** PHONE: **(406) 752-1790**

FAX: **(406) 758-5170**

Jeffrey S. Eshleman, MD

Mallory Pursley, ARNP, MSN,

Justin M. Linam, MD

**NATUROPATHIC ONCOLOGY** PHONE: **(406) 751-7560**

FAX: **(406) 756-3529**

Lynn Troy, ND, FABNO

## Logan Health Rheumatology – Kalispell

150 Commons Way

**RHEUMATOLOGY** PHONE: **(406) 752-2010**

FAX: **(406) 752-2047**

Roger J. Diegel, MD

Cheryl Burnett, FNP-C

Peter Henning, MD

Meghan Duvall, DNP, FNP-BC

## Logan Health Specialty Care – Bozeman

1610 Ellis Street, Suite 1B

PHONE: **(406) 602-4995**

FAX: **(406) 890-7301**

## Logan Health Specialty Care – Columbia Falls

500 12th Ave. W

PHONE: **(406) 607-4482**

FAX: **(406) 751-8271**

## Logan Health Specialty Care – Eureka

298 Osloski Road

PHONE: **(406) 297-7713**

FAX: **(406) 297-7698**

## Logan Health Specialty Care – Great Falls

2012 14th Street SW, Suite 1

PHONE: **(406) 604-4960**

FAX: **(406) 758-1894**

## Logan Health Specialty Care – Helena

121 N. Last Chance Gulch, Suite C

PHONE: **(406) 603-4900**

FAX: **(406) 890-7305**

## Logan Health Specialty Care – Libby

308 Louisiana Avenue, Suite 4

PHONE: **(406) 293-6594**

# SPECIALTY CARE

Logan Health Specialty Care – Missoula

1821 South Avenue, Suite 202

PHONE: (406) 493-0844

FAX: (406) 493-0841

Logan Health Specialty Care – Polson

103 Whitewater Place, Suite C

PHONE: (406) 883-3200

FAX: (406) 883-9483

Logan Health Specialty Care – Whitefish

1111 Baker Avenue, Suite 2

PHONE: (406) 863-9340

FAX: (406) 863-9342

Logan Health Surgical Clinic – Kalispell

1333 Surgical Services Drive

PHONE: (406) 751-5392

FAX: (406) 751-0080

## GENERAL, TRAUMA AND ACUTE CARE SURGERY

Allison Alberton, MD  
John R. Craig, MD  
James Cromie, MD  
Justine A. Gavagan, MD  
Sydney R. Lillard, MD  
Erik D. Peltz, DO

Ida Wilson, MD  
John Breneman, PA-C  
Douglas Day, PA-C  
Mattie Murphy, PA-C  
Alexander Merkle, PA-C

## COLORECTAL SURGERY

Douglas Berglund, MD

## PLASTIC & RECON- STRUCTIVE SURGERY

Thomas Wright, MD

Maggie Ahmad, NP

## SURGICAL CRITICAL CARE

Erik D. Peltz, DO

Ida Wilson, MD

## SURGICAL ONCOLOGY

Neal W. Wilkinson, MD  
Nicholas Sich, MD

Sarah Krol, PA-C

## THORACIC SURGERY

Luis Alberton, MD  
Erik D. Peltz, DO

Christina Richardson, PA-C

## VASCULAR SURGERY

John R. Craig, MD  
Erik D. Peltz, DO

Bennett Dykstra, MD

# SPECIALTY CARE

## Logan Health Surgical Clinic – Whitefish

2000 Hospital Way

### GENERAL SURGERY

PHONE: **(406) 862-5575**

FAX: **(406) 862-3797**

Ryan Gunlikson, MD

## Logan Health Urology – Kalispell

350 Heritage Way, Suite 2300

### UROLOGY

PHONE: **(406) 890-7432**

FAX: **(406) 890-7402**

John D. Andenoro, MD  
Jared Heermans, MD  
Sarabeth L. Martin, MD  
Amy K. McKerrow, MD  
Vassilis J. Siomos, MD

Paul Downey, PA-C  
Michelle L. Hellwig, FNP  
Rhonda Johnson, PA  
Andrew J. Purcell, FNP-BC

## Logan Health Women’s Care – Kalispell

75 Claremont Street, Suite A

### GYNECOLOGY

PHONE: **(406) 752-8282**

FAX: **(406) 758-7373**

Shawn D. Barrong, MD  
Robert M. Rogers, MD  
Julie E. Cook, FNP

Michelle Nail-Noftsinger, FNP-C  
Kathleen F. Olson, WHNP

## Logan Health Wound Care – Kalispell

210 Sunnyview Lane

### Wound Care

PHONE: **(406) 756-4727**

FAX: **(406) 751-5350**

Brent Buchele, MD, MBA

Jill Thorn, PA-C

# SPECIALTY CARE – PEDIATRIC

Logan Health Children’s Specialists – Kalispell 202 Conway Drive, Ste 200

PHONE: (406) 758-7490

FAX: (406) 758-7080

## PEDIATRIC ALLERGY, ASTHMA & IMMUNOLOGY

Summer E. Monforte, MD

## PEDIATRIC CARDIOLOGY

Austine K. Siomos, MD

## PEDIATRIC ENDOCRINOLOGY

Nathan C. Bingham, MD, PhD  
Catherine Baran, RN, CDCES  
Katherine E. Flass, PA-C

Brooke Foth, RDN, CDCES  
Marci Shaffer, RD  
Claire Steinberg, CPNP-PC

## PEDIATRIC GASTROENTEROLOGY

Thomas E. Flass, MD  
Daniel G. Lustig, MD

Kimberly L. Longcake, ANP

## PEDIATRIC HEMATOLOGY & ONCOLOGY

Rachel Brennan, MD  
Britni Looper-Hill, MD

Allie J. Maffit, MD  
Marni Allen, FNP-BC

## PEDIATRIC NEUROLOGY

Dmitry Tchapyjnikov, MD  
Marcus S. Wheeler, MD

Jennifer Shipley, CPNP

## PEDIATRIC NEUROSURGERY

Kelly S. Schmidt, MD

Jessica Christensen, PA-C

## PEDIATRIC ORTHOPEDICS

Joseph Fox, MD\*

Patrick Parenzin, PA-C\*

## PEDIATRIC PHYSICAL MEDICINE & REHAB

Nicholas L. Fleming, DO

## PEDIATRIC RHEUMATOLOGY

Julie Campbell, MD

## PEDIATRIC SURGERY

David Andrews, MD  
Bradley Linden, MD  
Rona L. Norelius, MD  
Patricia Valusek, MD

Katrina Weaver, MD  
Rachel A. Desimone, NP  
Brianna R. Peltz, PA-C

\* In collaboration with Seattle Children’s

# SUPPORT SERVICES

## Conrad

### LOGAN HEALTH HOME CARE – CONRAD

805 Sunset Blvd.

PHONE: (406) 271-7323

FAX: (406) 271-2025

### LOGAN HEALTH MEDICAL EQUIPMENT – CONRAD

805 Sunset Blvd.

PHONE: (406) 271-5566

FAX: (406) 271-5569

## Columbia Falls

### LOGAN HEALTH PHARMACY – COLUMBIA FALLS

2100 Ninth Street West

PHONE: (406) 892-9997

FAX: (406) 892-2376

## Cut Bank

### LOGAN HEALTH EMERGENCY MEDICAL SERVICES – CUT BANK

1102 East Main Street

PHONE: (406) 873-2722

FAX: (406) 873-3118

SECONDARY PHONE: (406) 873-2288

## Eureka

### LOGAN HEALTH HOME CARE & HOSPICE

304 Osloski Road

PHONE: (406) 297-2187

FAX: (406) 297-3803

## Lakeside

### LOGAN HEALTH FITNESS CENTER – LAKESIDE

306 Stoner Loop

PHONE: (406) 844-2496

## Libby

### LOGAN HEALTH HOME CARE & HOSPICE

313 Montana Avenue

PHONE: (406) 283-7300

FAX: (406) 293-9420

## Polson

### LOGAN HEALTH FITNESS CENTER – POLSON

101 Whitewater Place

PHONE: (406) 883-7450



# SUPPORT SERVICES

## Kalispell

### LOGAN HEALTH CANCER SUPPORT

343 Sunnyview Lane      PHONE: (406) 752-0130

### LOGAN HEALTH DIABETES EDUCATION & PREVENTION

430 Windward Way      PHONE: (406) 751-5454

### LOGAN HEALTH FITNESS CENTER

205 Sunnyview Lane      PHONE: (406) 751-4100      FAX: (406) 751-6983

### LOGAN HEALTH HOME CARE & HOSPICE

275 Corporate Drive      PHONE: (406) 751-4200      FAX: (406) 758-3277

### LOGAN HEALTH MEDICAL EQUIPMENT

55 3rd Ave. EN      PHONE: (406) 752-6111      FAX: (406) 257-2360

### LOGAN HEALTH OUTPATIENT HOSPITAL INFUSION

310 Sunnyview Lane      PHONE: (406) 751-7152      FAX: (406) 751-7570

### LOGAN HEALTH OUTPATIENT LAB SERVICES

75 Claremont St., Suite D      PHONE: (406) 752-1737      FAX: (406) 758-8408

### LOGAN HEALTH OUTPATIENT NUTRITION SERVICES

1297 Burns Way      PHONE: (406) 751-6728      FAX: (406) 758-3263

### LOGAN HEALTH PHARMACY – CLINICAL

200 Conway Drive      PHONE: (406) 751-7600      FAX: (406) 257-5230

### LOGAN HEALTH PULMONARY FUNCTION LAB

350 Heritage Way      PHONE: (406) 257-8992      FAX: (406) 257-8996

### LOGAN HEALTH RESEARCH

350 Heritage Way      PHONE: (406) 752-7636      FAX: (406) 752-7847

### LOGAN HEALTH SLEEP LAB

200 Commons Way      PHONE: (406) 257-8979      FAX: (406) 257-8996

### LOGAN VIRTUAL HEALTH – PATIENT AND CLINICIAN SUPPORT

310 Sunnyview Lane      PHONE: (406) 751-6492

LOGAN  
HEALTH